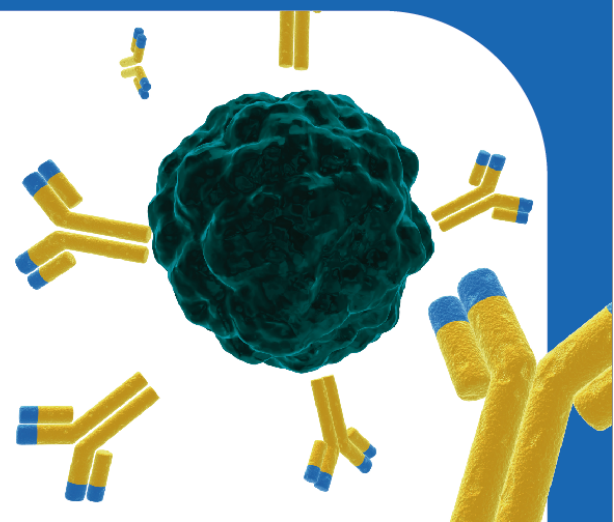


Single B Cell Screening

Unlocking High-Affinity, Antigen-Specific Antibodies with FACS



Fluorescence-activated cell sorting (FACS) enables precise isolation of antigen-specific B cells by simultaneously labeling antigens and B cell surface markers with multiple fluorescent tags. This high-throughput, highly sensitive, and accurate approach allows direct retrieval of single B cells along with their naturally paired VH/VL genes, preserving antibody affinity and functionality. The platform is widely used in therapeutic antibody discovery (cancer immunotherapy, autoimmune diseases, infectious diseases), diagnostic antibody screening (ELISA, POCT), and research applications (signal pathway studies, protein function validation).

Tsingke offers



Fast Turnaround:

Complete in 8–10 weeks — about half the time of traditional hybridoma methods



High Specificity:

Preserve natural VH/VL pairing



High Affinity:

Up to 10^{-8} – 10^{-12} M

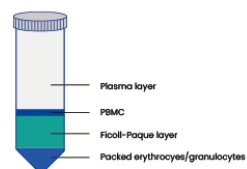


Customized Solutions:

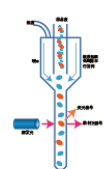
Enable antibody discovery in mouse and rabbit to support diverse pharmaceutical, diagnostic, and research applications



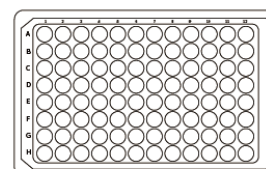
Rabbit Immunization



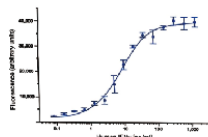
PBMC Isolation



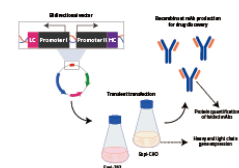
Flow Cytometry Single B Cell Sorting



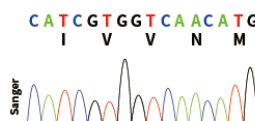
Single B Cell VH/VL Amplification



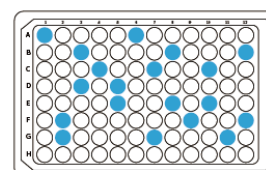
Recombinant Antibody Validation



Recombinant Antibody Expression



Antibody Sequencing



Antibody Expression Screening

FACS-based Single B Cell Screening Workflow

Single B Cell Screening Service

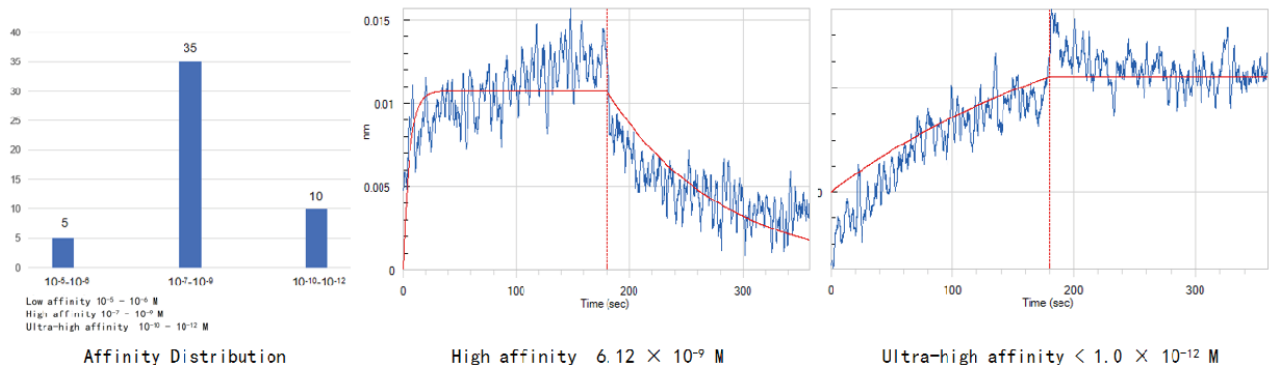
Service Name	Service ID	Turnaround	Deliverables
Single B Cell Screening Service – Mouse mAb	Tsingke-B01	8-10 weeks	Phase I Collect 5 µL serum per animal for titer testing; select the best individual with titer ≥ 1:100 K to advance
Single B Cell Screening Service – Rabbit mAb	Tsingke-B02		Phase II (1) 10 positive culture supernatants (2) 1 antibody gene sequence (3) 1–3 mg of purified mAb with corresponding expression plasmids (ELISA titer ≥ 1:100 K)

*Turnaround time in the table applies only when the client provides antigens.

Case Study

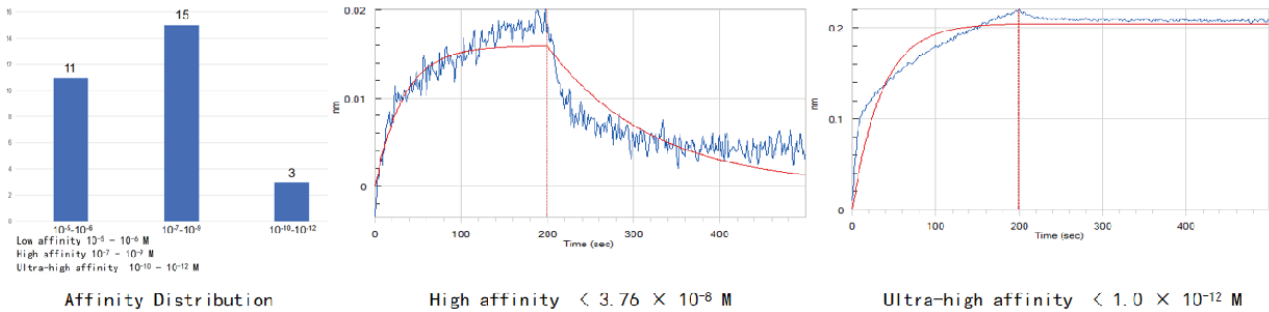
Case 1. Mouse Single B Cell Screening

A total of 50 mouse mAbs were obtained from FACS-sorted single B cells. All bound the target antigen (100% ELISA positive) with 45 showing strong binding.



Case 2. Rabbit Single B Cell Screening

A total of 29 rabbit mAbs were obtained from FACS-sorted single B cells. All bound the target antigen (100% ELISA positive) with 18 showing strong binding.



Contact us



EN www.tsingke.com | CN www.tsingke.com.cn



market@tsingke.com.cn | info@tsingke.com.cn



Tsingke



tsingkebio



Tsingke Biotech